

**AVAILABLE MOUNTING CONFIGURATIONS**

8H-CC CLOSE COUPLED  
8H-VM VERTICAL CLOSE COUPLED

**OPERATING LEVELS**

|                 |          |                          |
|-----------------|----------|--------------------------|
| MIN FLOW        | 900 GPM  | 204.4 m <sup>3</sup> /h  |
| MAX FLOW        | 4950 GPM | 1124.3 m <sup>3</sup> /h |
| DISCHARGE SIZE  | 8"       | 203 mm                   |
| SUCTION SIZE    | 10"      | 254 mm                   |
| SOLIDS HANDLING | 1.25"    | 3.2 cm                   |
| MAX SPEED       | 1800 RPM | 1800 RPM                 |
| SHUT-OFF HEAD   | 250'     | 76 m                     |
| BEP HEAD        | 200'     | 61 m                     |
| BEP FLOW        | 3650 GPM | 829 m <sup>3</sup> /h    |
| BEP PERCENT     | 88%      | 88%                      |



A typical picture of the pump is shown. Please contact StarTech Pump Company for further details. All information is approximate and for general guidance only.

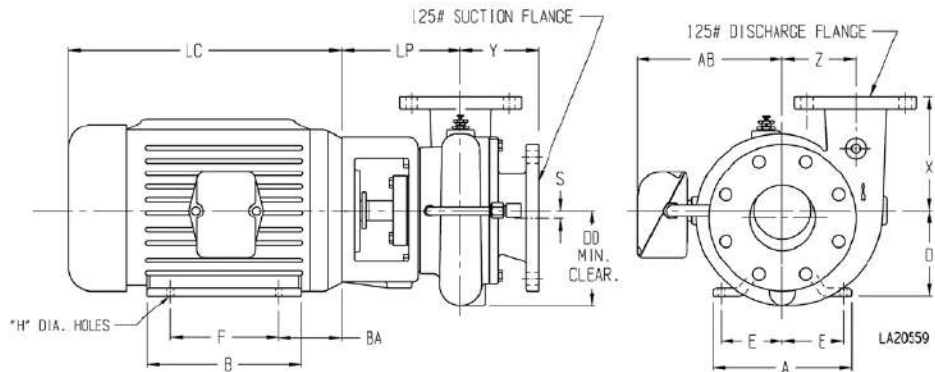
| PARTS                      | ALL IRON                                  | CAST IRON BRONZE FITTED                   |
|----------------------------|---|---|
| IMPELLER                   | CAST IRON ASTM A48 CL30                   | BRONZE SAE 40 OR SILICON BRONZE           |
| VOLUTE                     | CAST IRON ASTM A48 CL30                   | CAST IRON ASTM A48 CL30                   |
| SHAFT                      | CARBON STEEL                              | CARBON STEEL                              |
| SHAFT SLEEVE               | 416 STAINLESS STEEL                       | BRONZE SAE 660                            |
| MOTOR                      | ODP W/ 1.15 SF                            | ODP W/ 1.15 SF                            |
| WEAR RINGS                 | CAST IRON ASTM A48 CL30                   | BRONZE SAE 660                            |
| SUCTION SPOOL              | CAST IRON ASTM A48 CL30                   | CAST IRON ASTM A48 CL30                   |
| BACKPLATE                  | CAST IRON ASTM A48 CL30                   | CAST IRON ASTM A48 CL30                   |
| MECHANICAL SEAL (OPTIONAL) | T-1 OR T2, BUNA, CARBON/CERAMIC/STAINLESS | T-1 OR T2, BUNA, CARBON/CERAMIC/STAINLESS |
| PACKING                    | GRAPHITED ACRYLIC                         | GRAPHITED ACRYLIC                         |

The 8H pump is designed with StarTech's renowned quality and durability. It features a 8" discharge, 10" suction, **enclosed impeller, and flanged tangential double volute.** Available in **all-iron or bronze-fitted materials.** Graphited acrylic packing is standard, with StarTech's patented Cycloseal available (with type 1 single mechanical seal). **Optional motors include TEFC (other options available).**

- **Standard cast iron bronze fitted construction**
- External hydraulic balanceline
- **Double volute construction**
- Back pullout design
- Replaceable hub & suction wearings
- **Replaceable shaft sleeve**

- "Shower curtain shield" bearing protection
- High efficiency hydraulics
- Low operating costs
- Two year warranty
- Other mechanical seal (cycloseal) and material options available





PUMP DIMENSIONS

| MODEL | CONNECTION |       | DISCH. INCR. | AK DIM. | DD    | S    | X   | Y     | Z     | LP    |
|-------|------------|-------|--------------|---------|-------|------|-----|-------|-------|-------|
|       | DISCH.     | SUCT. |              |         |       |      |     |       |       |       |
| 2.5H  | 2.5        | 4     | 90°          | 8.5     | 9.62  | 0.44 | 11  | 8.28  | 7.75  | 7.66  |
|       |            |       |              | 12.5    | 9.62  | 0.44 | 11  | 8.28  | 7.75  | 7.66  |
| 3HA   | 3          | 6     | 90°          | 12.5    | 11.12 | 0.44 | 10  | 8.53  | 8.5   | 10.09 |
| 3HC   | 3          | 6     | 90°          | 12.5    | 11.12 | 0.44 | 10  | 8.53  | 8.5   | 10.09 |
| 4HC   | 4          | 8     | 90°          | 12.5    | 12.62 | 0.88 | 11  | 10.88 | 9.75  | 11.19 |
| 4HH   | 4          | 6     | 90°          | 12.5    | 15    | 0.44 | 9.5 | 8.97  | 11.25 | 10.12 |
|       |            |       |              | 12.5    | 14.75 | 0.88 | 13  | 9.66  | 11.62 | 10.15 |
| 5HH   | 5          | 8     | 90°          | 12.5    | 16.25 | 0.44 | 11  | 10.56 | 10.25 | 10.81 |
|       |            |       |              | 16.5    | 16.25 | 0.44 | 11  | 10.56 | 10.25 | 10.81 |
| 6H    | 6          | 8     | 90°          | 12.5    | 14.75 | 0.44 | 14  | 10.18 | 11.62 | 10.12 |
|       |            |       |              | 16.5    | 14.75 | 0.44 | 14  | 10.18 | 11.62 | 10.12 |
| 6HH   | 6          | 8     | 90°          | 12.5    | 17.12 | 0.44 | 12  | 10.43 | 12    | 11.13 |
|       |            |       |              | 16.5    | 17.12 | 0.44 | 12  | 10.43 | 12    | 11.13 |
| 8H    | 8          | 10    | 90°          | 12.5    | 16.75 | 0.75 | 13  | 10.41 | 11.5  | 11.38 |
|       |            |       |              | 16.5    | 16.75 | 0.75 | 13  | 10.41 | 11.5  | 11.38 |

MOTOR DIMENSION

| MOTOR FRAME | AK DIM. | A     | B     | D    | E    | F     | H    | AB    | BA   | LC    |
|-------------|---------|-------|-------|------|------|-------|------|-------|------|-------|
| 213-5       | 8.5     | 9.5   | 8     | 5.25 | 4.25 | 7     | 0.41 | 7.94  | 4.5  | 13.69 |
| 254-6       | 8.5     | 11.25 | 11.25 | 6.25 | 5    | 10    | 0.53 | 9.5   | 5    | 17.94 |
| 284-6       | 12.5    | 12.25 | 12.25 | 7    | 5.5  | 11    | 0.53 | 11.37 | 5    | 21.31 |
| 324-6       | 12.5    | 14.25 | 13.75 | 8    | 6.25 | 12    | 0.66 | 12.22 | 5.5  | 22.19 |
| 364-5       | 12.5    | 15.75 | 14    | 9    | 7    | 12.25 | 0.66 | 13.2  | 6.12 | 24.31 |
| 404-5       | 12.5    | 18.5  | 16.62 | 10   | 8    | 13.75 | 0.81 | 16.39 | 6.88 | 29.97 |
| 444-5       | 16.5    | 21.5  | 19.5  | 11   | 9    | 16.5  | 0.81 | 19.06 | 7.5  | 31    |

