

**STARTECH PUMP COMPANY**

200 - 1000 GPM

4 WH

15 - 200 Feet TDH

STANDARD SPECIFICATION**Discharge** - 4 inch flanged discharge**Suction** - 5 inch flanged suction**Balance Line** - Stainless steel tubing**Impeller** - Enclosed bronze**Volute** - Right hand tangential discharge, four positions**Mechanical Seal or Traditional Packing** - Single type 1 carbon ceramic mechanical seal: Cycloseal® design, run-dry available**Footprint** - Matches StarTech's historical 4WB**Materials of Construction**

- Cast iron bronze fitted
- Other materials available

MOUNTING OPTIONS**• Close Coupled Electric**

Standard JP motor shaft

- Standard Efficiency – StarTech's Energy Efficient Design

• Frame Mount

StarTech's F5

StarTech's F16

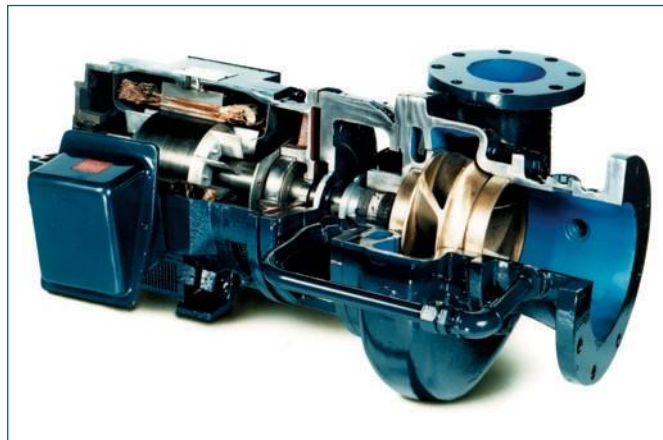
StarTech's F85

• Engine Bracket

StarTech's EM5 (SAE 5)

StarTech's EM16 (SAE 3 and 4)

StarTech's EM85 (SAE 3 and 4)

**FEATURES & BENEFITS****• Cornell's Tradition of Excellence:****• Highest Quality Products •****Experience**

- Over 50 years in the centrifugal pump business

• Optimum Hydraulics

- In house engineering staff and test lab facilities

• Strong Local Dealer Support

- Our agricultural products are sold only through authorized dealerships
- Dealerships provide full service to customers from sales to replacement parts
- Dealers maintain and improve their knowledge at educational activities like StarTech's "Pump School"

• Economically Priced:**• Component Design**

- Efficient manufacturing through increased volume of common parts

• Versatility

- The ability to mix and match components reducing local inventory of both parts and whole goods with a wide variety of pumps and mounting configurations for the customer

• Exceptional Design:**• Efficiency**

- Effectively converts energy into fluid flow and pressure

• Long Product Life

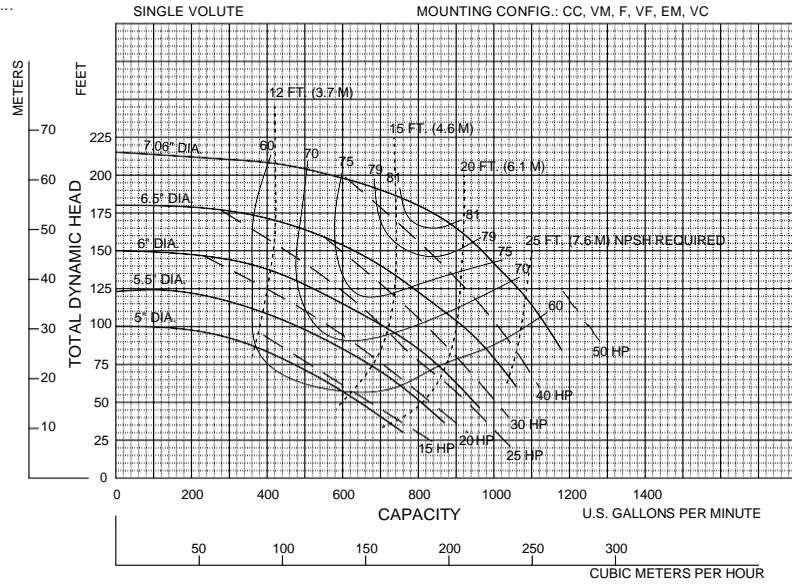
- Thick walled castings - Heavy duty shafts
- 20,000 hour bearings - Replaceable wear rings and shaft sleeves - Reduced thrust load through design and balance lines where appropriate

PERFORMANCE CURVES

4 WH
3600 RPM

| | | | | | | | |
|-------|---------------|----------|-------------|----------------|---------|-----------|-----------|
| Speed | Impeller Dia. | Style | Solids Dia. | N _S | Suction | Discharge | No. vanes |
| 3560 | VARIOUS | ENCLOSED | 1.19" | 2107 | 5" | 4" | 5 |

Performances shown are for cool water, closed system, 100% efficiency.
Other mounting styles or figure may require horsepower and/or performance adjustments.



Note:
Curves also available in 1800 and various RPM

1/11/06

4

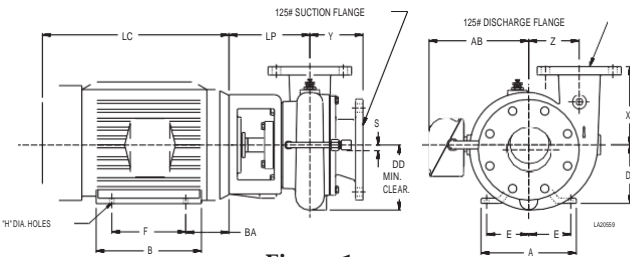


Figure 1

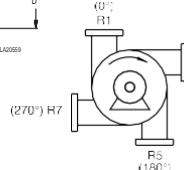


Figure 2

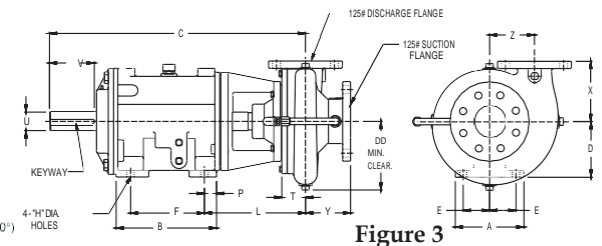


Figure 3

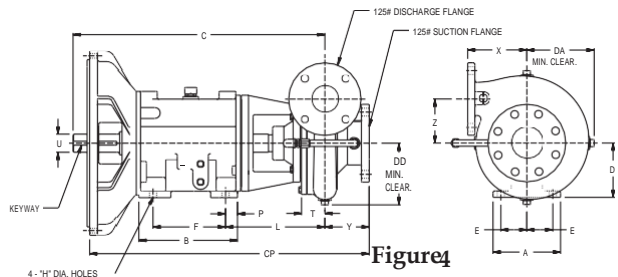


Figure 4

PUMP DIMENSIONS

| MOUNT | AK | Fig. | A | B | C | CP | D | DA | DD | E | F | H | L | P | T | U | V | X | Y | Z | LP | KEYWAY |
|-------|------|------|-----|-------|-------|-------|------|-----|------|------|-------|------|------|------|------|------|------|------|------|------|----|-----------|
| CC | 8.5 | 1 | - | - | - | - | - | - | 7.41 | - | - | - | - | - | - | - | - | 7.5 | 5.03 | 4.75 | 8 | - |
| | 12.5 | 1 | - | - | - | - | - | - | 7.41 | - | - | - | - | - | - | - | - | 7.5 | 5.03 | 4.75 | 8 | - |
| F5 | - | 2 | 7.5 | 7.36 | 19.5 | - | 5.5 | - | 7.5 | 2.62 | 4.5 | 0.56 | 9.59 | 1.44 | - | 1.25 | 3 | 7.5 | 5.03 | 4.75 | - | .25 X .12 |
| F16 | - | 2 | 12 | 12.88 | 26 | - | 9.75 | - | 7.5 | 5.12 | 10.38 | 0.69 | 8.16 | 0.88 | - | 2 | 4.5 | 7.5 | 5.03 | 4.75 | - | .50 X .25 |
| F85 | - | 3 | 6.5 | 9.52 | 24.45 | - | 5.25 | - | 7.5 | 2.5 | 7 | 0.69 | 9.72 | 1.15 | 2.38 | 1.75 | 4.25 | 7.5 | 5.03 | 4.75 | - | .38 X 19 |
| EM5 | - | 4 | 7.5 | 7.36 | 19.5 | 24.14 | 5.5 | 7.5 | 7 | 2.62 | 4.5 | 0.56 | 9.59 | 1.44 | 3.5 | 1.25 | - | 7.5 | 5.03 | 4.75 | - | .25 X .12 |
| EM16 | - | 4 | - | - | 26 | 29.03 | - | 7.5 | 7 | - | - | - | - | - | - | 2 | - | 6 | 4.76 | 4.5 | - | .50 X .25 |
| EM85 | - | 4 | - | - | 24.45 | 27.88 | 5.25 | - | 7.50 | - | - | - | - | - | 2.38 | 1.75 | - | 7.50 | 5.03 | 4.75 | - | .38 X 19 |

MOTOR DIMENSIONS

| MOTOR FRAME | AK DIM. | A | B | D | E | F | H | AB | BA | LC |
|-------------|---------|-------|-------|------|------|-------|------|-------|------|-------|
| 143-5 | 4.5 | 6.5 | 5.94 | 3.5 | 2.75 | 5 | 0.34 | 5.62 | 2.88 | 10 |
| 182-3 | 4.5 | 8.62 | 6.5 | 4.5 | 3.75 | 5.5 | 0.41 | 6.75 | 3.5 | 12.25 |
| | 8.5 | 8.62 | 6.5 | 4.5 | 3.75 | 5.5 | 0.41 | 6.75 | 3.5 | 12.25 |
| 213-5 | 8.5 | 9.5 | 8 | 5.25 | 4.25 | 7 | 0.41 | 7.94 | 4.5 | 13.69 |
| 254-6 | 8.5 | 11.25 | 11.25 | 6.25 | 5 | 10 | 0.53 | 9.5 | 5 | 17.94 |
| 284-6 | 12.5 | 12.25 | 12.25 | 7 | 5.5 | 11 | 0.53 | 11.37 | 5 | 21.31 |
| 324-6 | 12.5 | 14.25 | 13.75 | 8 | 6.25 | 12 | 0.66 | 12.22 | 5.5 | 22.19 |
| 364-5 | 12.5 | 15.75 | 14 | 9 | 7 | 12.25 | 0.66 | 13.2 | 6.12 | 24.31 |

StarTech Pump Company

ISO9001:2000 CERTIFIED