

**STARTECH PUMPS COMPANY**250 - 2000 GPM **Model 4514T** 20 - 375 Feet TDH**STANDARD SPECIFICATION****Discharge** - 4 inch discharge**Suction** - 5 inch suction**Impeller** - Enclosed, 2 vane: handles 3" solids**Volute** - Right and left hand tangential or centerline discharge, eight positions**Mechanical Seal** - Single type 2 tungsten silicon mechanical seal: Cycloseal® design, Run-Dry™ available**Materials of Construction**

- Cast iron casing, ductile iron impeller
- Other materials available

MOUNTING OPTIONS**• Frame Mount**

- StarTech F19
- StarTech F18
- StarTech F18DB

• Vertical Frame Mount

- StarTech VF16 StarTech VF18

• Vertical Coupled

- StarTech VC16
- StarTech VC18

• Engine Bracket

- StarTech EM18 (SAE 1, 2, 3)
- StarTech EM18DB (SAE 1, 2, 3)

• Oil Filled Bearing Frame

- Available

• Redi-Prime® Self Priming System

- Available

AVAILABILITY**• Specialty Pump**

- StarTech Pump Company will design and manufacture a variation of this pump specifically designed for your application

**FEATURES & BENEFITS****• StarTech's Tradition of Excellence:****• Highest quality products •****Experience**

- Over 50 years in the centrifugal pump business

• Optimum Hydraulics

- In house engineering staff and test lab facilities

• Strong Local Dealer Support

- Our agricultural products are sold only through authorized dealerships
- Dealerships provide full service to customers from sales to replacement parts
- Dealers maintain and improve their knowledge at educational activities like StarTech's "Pump School"

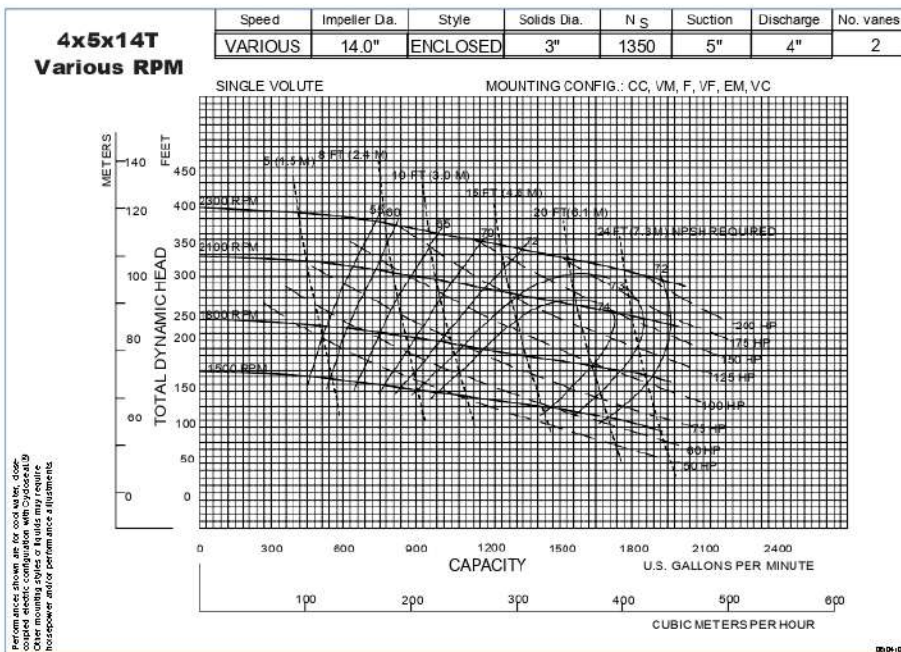
• Exceptional Design:**• Efficiency**

- Effectively converts energy into fluid flow and pressure

• Long Product Life

- Thick walled castings
- Heavy duty shafts
- 20,000 hour bearings - minimum
- Replaceable wear rings and shaft sleeves

PERFORMANCE CURVES



Note:
Curves also available in 1800 and 1200 RPM

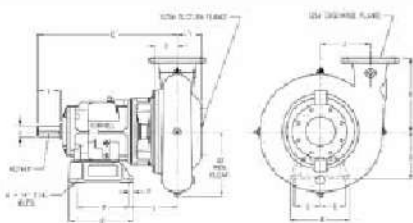


Figure 1

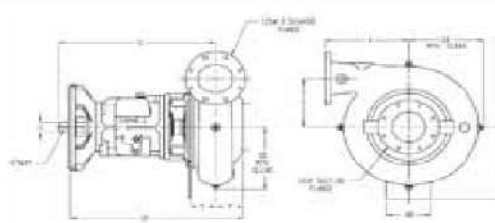


Figure 4

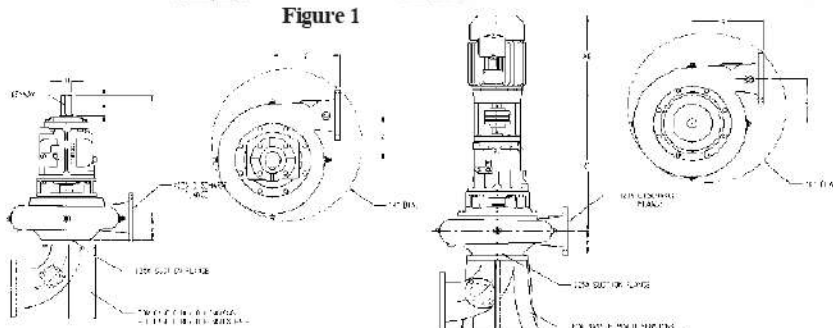
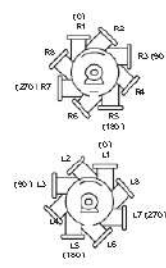
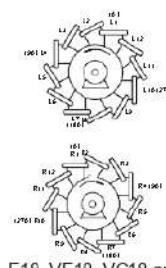


Figure 2

Figure 3



All configurations



F18, VF18, VC18 and Engine Mount only

PUMP DIMENSIONS

MOUNT	Fig.	BD	A	AR	B	C	CP	D	DA	DD	E	F	H	K	L	LP	P	R	T	U	V	X	Y	Z	KEYWAY
F16	1	-	12	-	12.88	26.5	-	9.75	-	11.31	5.12	10.38	0.81	-	8.62	-	0.88	-	3.94	2	4.5	11	4.75	9.25	.50 X .25
F18	1	-	12	-	12.88	27.5	-	10.5	-	11.31	5.12	10.38	0.81	-	9.12	-	0.88	-	3.94	2.5	4.5	11	4.75	9.25	.62 X .31
VF16	2	-	-	-	-	27.5	-	-	-	-	-	-	-	29	-	-	-	-	-	2.5	4.5	11	4.75	9.25	.50 X .25
VF18	2	-	-	-	-	27.5	-	-	-	-	-	-	-	29	-	-	-	-	-	2.5	4.5	11	4.75	9.25	.62 X .31
VC16	3	10	-	-	-	29.5	-	-	-	-	-	-	-	29	-	-	-	-	-	-	-	11	4.75	9.25	.50 X .25
VC16	3	16.5	-	-	-	31.25	-	-	-	-	-	-	-	29	-	-	-	-	-	-	-	11	4.75	9.25	.50 X .25
VC18	3	16.5	-	-	-	32.25	-	-	-	-	-	-	-	29	-	-	-	-	-	-	-	11	4.75	9.25	.62 X .31
EM18	4	-	-	8	-	27.5	30.25	-	11.31	11.25	-	-	-	-	-	-	-	14.42	3.94	2.5	-	11	4.75	9.25	.62 X .31

VC MOTOR DIMENSIONS

NEMA FRAME	182	184	213	215	254	256	284	286	324	326	364	365	404	405	444	445	505
AG	13.16	14.16	18.25	19.75	22.31	24.06	24.5	26	27.44	28.94	26	26	28.81	28.81	33	33	35.25