



3HA

300 - 850 GPM
150 - 425 Feet TDH



STANDARD SPECIFICATION

DISCHARGE

- 3 inch flanged discharge

SUCTION

- 6 inch flanged suction

BALANCE LINE

IMPELLER

- Enclosed silicon bronze

VOLUTE

- Right hand tangential discharge, four positions
- Mechanical Seal or Traditional Packing - Single type 1 carbon ceramic mechanical seal: Cycloseal® design, Run-Dry® available

MATERIALS OF CONSTRUCTION

- Cast iron bronze fitted
- Other materials available

MOUNTING CONFIGURATIONS

CLOSE COUPLED ELECTRIC

- StarTech's Energy Efficient Design **FRAME MOUNT**

- StarTech F16
- StarTech F18

ENGINE BRACKET

- StarTech EM16 (SAE 1, 2, 3, 4)
- StarTech EM18 (SAE 1, 2, 3, 4)

REDI-PRIME®SELF PRIMINGSYSTEM

- Available

PRODUCT AVAILABILITY

QUICK SHIP

- Finished Product Regularly Stocked
- Specific Configuration, Specific Trim (48Hours)

PREFERRED PUMP

- Finished Components Regularly Stocked
- Various Configurations, Variable Trim (10 business days)

SPECIALTY PUMP

- StarTech Pump Company will design and manufacture a variation of this pump specifically designed for your application

FEATURES AND BENEFITS

EXPERIENCE

- Over 50 years in the centrifugal pump business

OPTIMUM HYDRAULICS • In house engineering staff and test lab facilities **STRONG LOCAL**

DEALER SUPPORT • Our agricultural products are sold only through

authorized dealerships • Dealerships provide full service to customers from

sales to replacement parts • Dealers maintain and improve their knowledge at

educational activities like StarTech's "Pump School"

EXCEPTIONAL DESIGN

EFFICIENCY

- Efficiently converts energy into fluid flow and pressure

LONG PRODUCT LIFE

- Thick walled castings
- Heavy duty shafts
- 20,000 hour bearings
- Replaceable wear rings and shaftsleeves
- Reduced thrust load through design and balance lines where appropriate

3HA

NEW PAGE

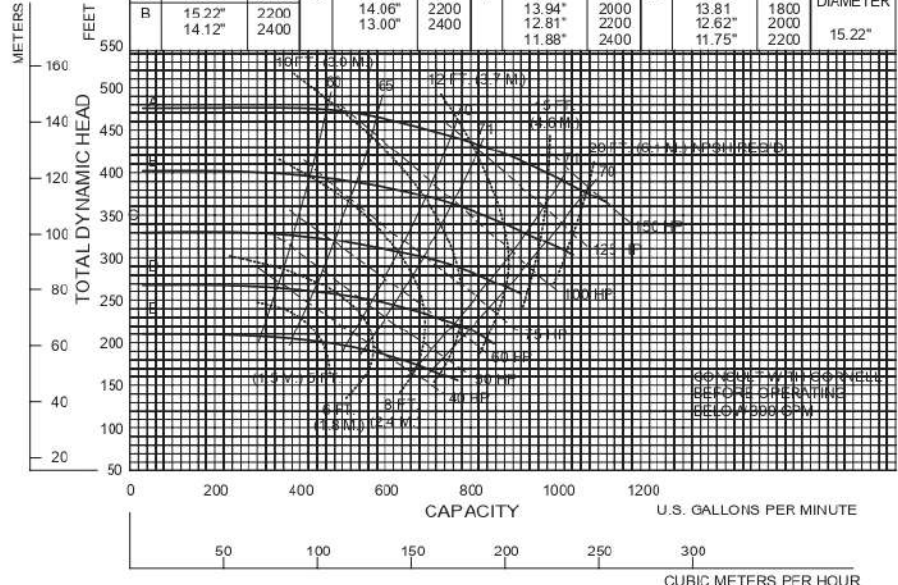
3HAVA

Feet x .305 = Meters
 Inches x 25.4 = Millimeters
 GPM x .227 = Cubic Meters/Hour
 GPM x 3.785 = Liters/Minute
 HP x .746 = KW

Speed	Impeller Dia.	Style	Solids Dia.	N _s	Suction	Discharge	No. vanes
VARIOUS	VARIOUS	ENCLOSED	.50"	800	6"	3"	6

SINGLE VOLUTE MOUNTING CONFIG.: CC, VM, F, VF, EM, VC

HQ	TRIM	RPM	HQ	TRIM	RPM	HQ	TRIM	RPM	HQ	TRIM	RPM	FULL DIAMETER
A	15.22"	2400	C	15.22"	2000	D	15.22"	1800	E	15.22"	1600	15.22"
B	15.22"	2200		14.06"	2200		13.94"	2000		13.81"	1800	
	14.12"	2400		13.00"	2400		12.81"	2200		12.62"	2000	
								2400			11.75"	2200

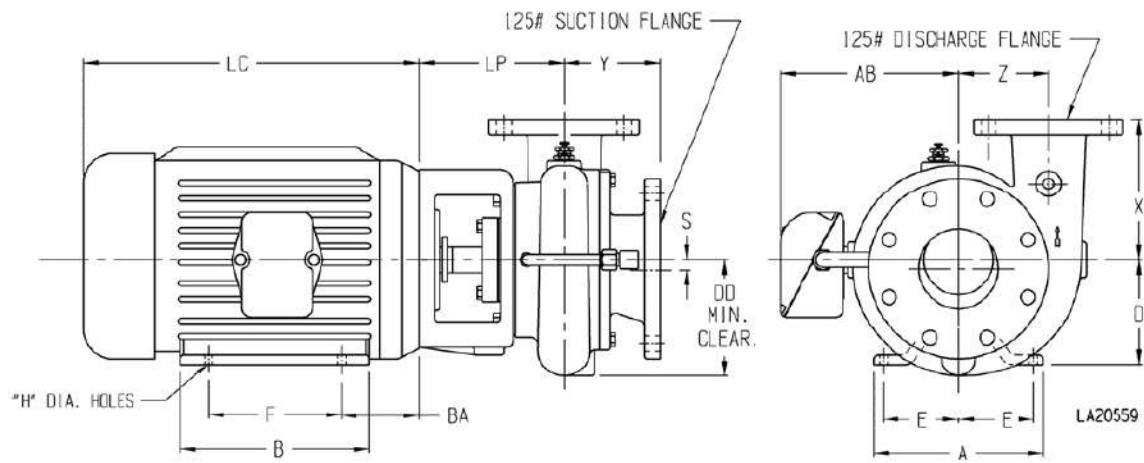


Performance shown is for cool water close to sea level. Comparison with other pumps. On all mounting styles of liquids that require horsepower and performance adjustments.

9/16/99

StarTech Pump Company • Portland, Oregon

3HA - VARIOUS RPM



MODEL	CONNECTION		DISCH. INCR.	AK DIM	DD	S	X	Y	Z	LP
	DISCH.	SUCT.								
2.5H	2.5	4	90°	8.5	9.62	0.44	11	8.28	7.75	7.66
				12.5	9.62	0.44	11	8.28	7.75	7.66
3HA	3	6	90°	12.5	11.12	0.44	10	8.53	8.5	10.09
3HC	3	6	90°	12.5	11.12	0.44	10	8.53	8.5	10.09
4HC	4	8	90°	12.5	12.62	0.88	11	10.88	9.75	11.19
4HH	4	6	90°	12.5	15	0.44	9.5	8.97	11.25	10.12
5H	5	8	90°	12.5	14.75	0.88	13	9.66	11.62	10.15
				12.5	16.25	0.44	11	10.56	10.25	10.81
5HH	5	8	90°	16.5	16.25	0.44	11	10.56	10.25	10.81
				12.5	14.75	0.44	14	10.18	11.62	10.12
6H	6	8	90°	16.5	14.75	0.44	14	10.18	11.62	10.12
				12.5	17.12	0.44	12	10.43	12	11.13
6HH	6	8	90°	16.5	17.12	0.44	12	10.43	12	11.13
				12.5	16.75	0.75	13	10.41	11.5	11.38
8H	8	10	90°	16.5	16.75	0.75	13	10.41	11.5	11.38

MOTOR FRAME	AK DIM.	A	B	D	E	F	H	AB	BA	LC
213-5	8.5	9.5	8	5.25	4.25	7	0.41	7.94	4.5	13.69
254-6	8.5	11.25	11.25	6.25	5	10	0.53	9.5	5	17.94
284-6	12.5	12.25	12.25	7	5.5	11	0.53	11.37	5	21.31
324-6	12.5	14.25	13.75	8	6.25	12	0.66	12.22	5.5	22.19
364-5	12.5	15.75	14	9	7	12.25	0.66	13.2	6.12	24.31
404-5	12.5	18.5	16.62	10	8	13.75	0.81	16.39	6.88	29.97
444-5	16.5	21.5	19.5	11	9	16.5	0.81	19.06	7.5	31