

AVAILABLE MOUNTING CONFIGURATIONS

3419MX-F FRAME MOUNT
3419MX-EM ENGINE MOUNT
3419MX-RP-F REDI-PRIME FRAME MOUNT
3419MX-RP-EM REDI-PRIME ENGINE MOUNT

OPERATING LEVELS

MIN FLOW	160 GPM	36 m ³ /h
MAX FLOW	860 GPM	195 m ³ /h
DISCHARGE SIZE	3"	75 mm
SUCTION SIZE	4"	100 mm
SOLIDS HANDLING	0.75"	19 mm
MAX SPEED	2400 RPM	2400 RPM
SHUT-OFF HEAD	840'	256 m
BEP HEAD	750'	229 m
BEP FLOW	720 GPM	163 m ³ /h
BEP PERCENT	55%	55%



A typical picture of the pump is shown. Please contact StarTech Pump Company for further details. All information is approximate and for general guidance only.

PARTS	STANDARD MATERIAL
WEAR RING	CAST IRON
IMPELLER	CA6NM
VOLUTE	DUCTILE IRON
SHAFT	17-4 PH STAINLESS STEEL
SHAFT SLEEVE	416 STAINLESS STEEL
BACKPLATE	DUCTILE IRON
MECHANICAL SEAL	TUNGSTEN CARBIDE VS. SILICON CARBIDE
O-RINGS	BUNA-N, NITRILE
BEARING FRAME	F18DB CAST IRON

The 3419MX pump is designed with StarTech's renowned quality and durability. It features a 3" discharge, 4" suction, and enclosed impeller. StarTech's patented Cycloseal® design is standard, with a Type 2 single mechanical seal with Buna-N elastomers, stainless steel hardware and tungsten carbide vs. silicon carbide seal faces for abrasion resistance.

- Impeller wear ring optionally hardened to 375-425 bhn
- Volute wear ring optionally hardened to 450-500 bhn
- 3 or 4 vane enclosed CA6NM impellers
- Heavy Duty Bearing Frame
- Double angular contact thrust bearings
- CA6NM Impeller is corrosion-resistant and abrasion-resistant
- **Industry-leading efficiencies**
- Two year Warranty



AGRICULTURE



FOOD



INDUSTRIAL



MINING



MUNICIPAL



OIL & GAS

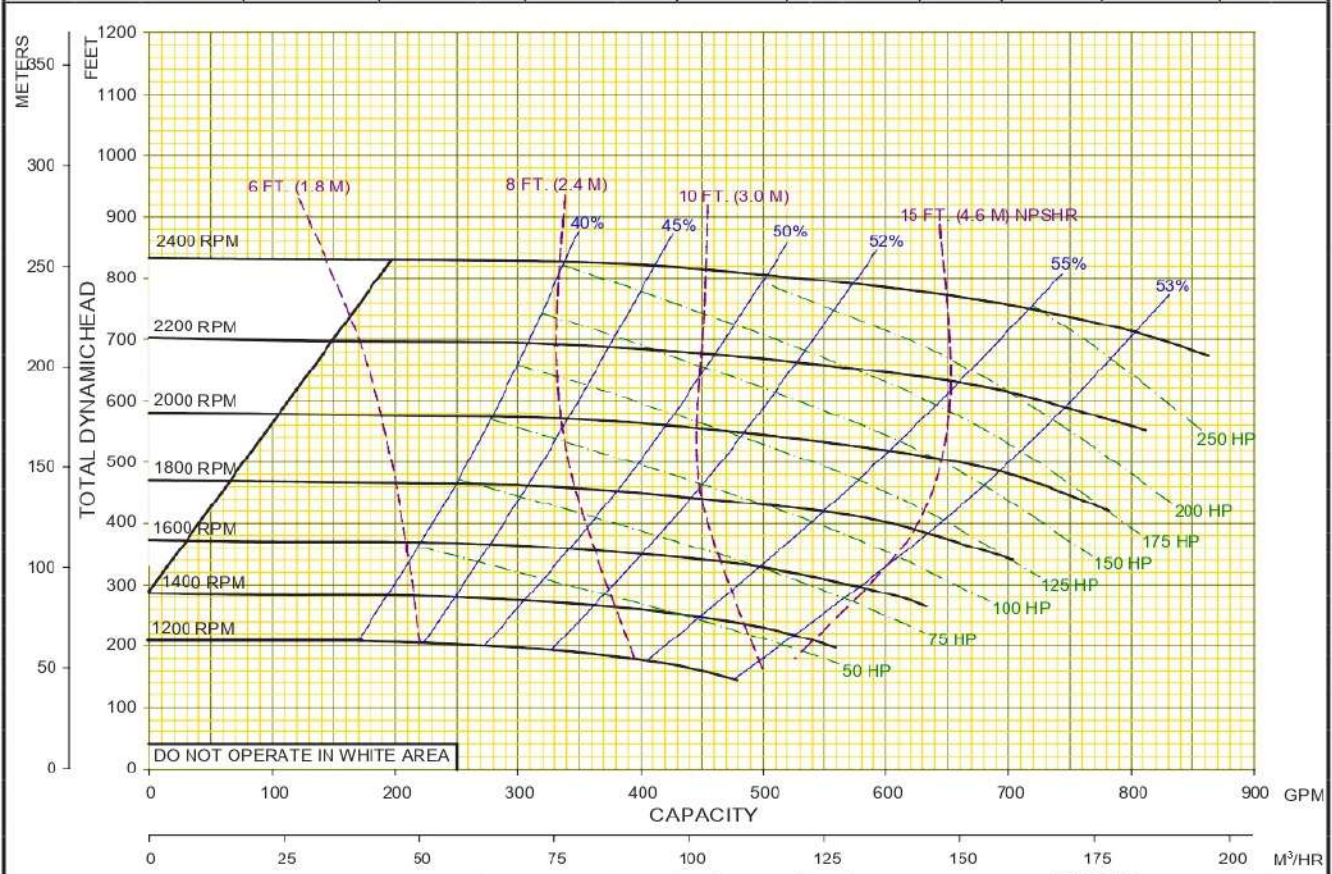


REFRIGERATION



RENTAL

Performances shown are for S.G. 1.0 60°F water, frame mounted configuration with cyclo seal. Other mounting styles or S.G. may require curve adjustments.	Speed	Impeller Dia.	Style	Volute	Solids Dia.	N _s	Suction	Discharge	No. Vanes
	VARIOUS	19.59"	ENCLOSED	SINGLE	.75"	450	4"	3"	4



StarTech Pump Company	02	03/31/15	CTG	MODEL : 3419MX TYPE :MX SERIES	CURVE NO: 3419MXVA
	00	06/03/09	---		