

**STARTECH PUMP COMPANY**

50 - 175 GPM

1.5 WH

75 - 200 Feet TDH

STANDARD SPECIFICATION**Discharge** - 1.5 inch threaded discharge**Suction** - 2 inch threaded suction**Impeller** - Enclosed cast iron**Volute** - Right hand tangential discharge, four positions**Mechanical Seal or Traditional Packing** - Single type 1 carbon ceramic mechanical seal: Cycloseal® design, run-dry available**Footprint** - Matches Cornell's historical 1.5W**Materials of Construction**

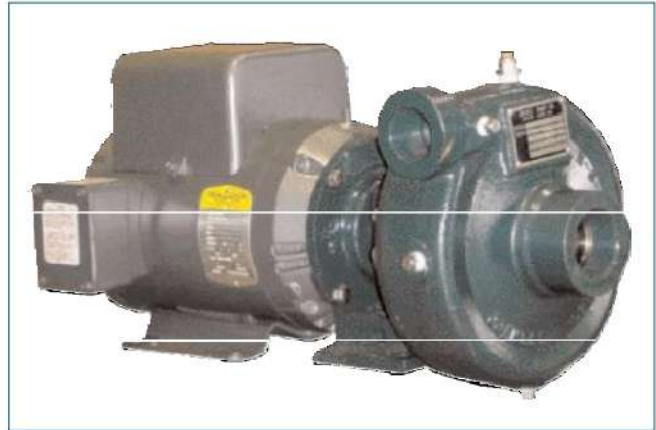
- Cast iron bronze fitted
- Other materials available

PURCHASE OPTIONS

- **Complete Pump** Fully assembled at the factory Ready to go to the field
- **Pump End Kit** Finished components
 - PrePainted Easy assembly
 - Common tools - Simple instructionsObtain drives locally or through Gemstone

MOUNTING OPTIONS

- **Close Coupled Electric** Standard JP motor shaft
 - Standard Efficiency - Gemstone's Energy Efficient Design
- **Frame Mount**
Gemstone F5
- **Engine Bracket** Gemstone EM5 (SAE 5)
Gemstone EM309 (SAE 5)

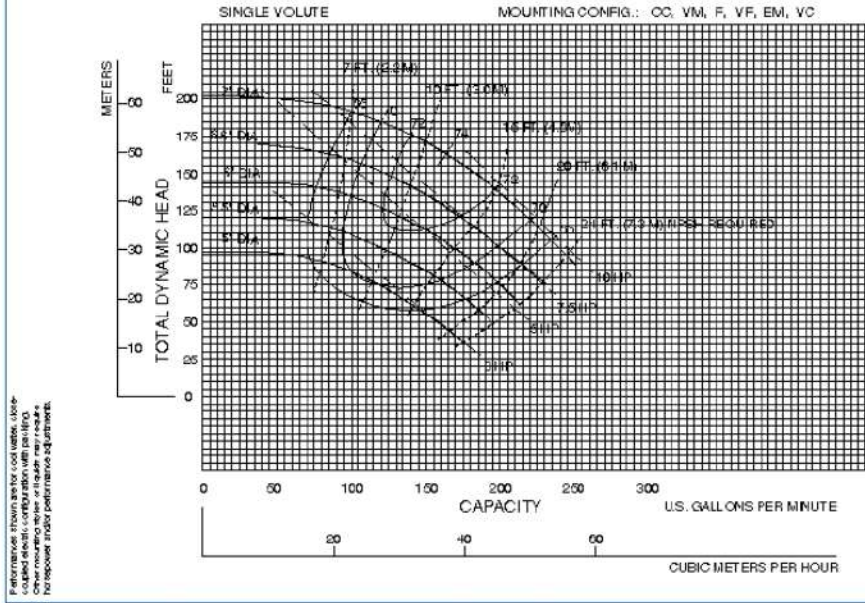
**FEATURES & BENEFITS**

- **StarTech's Tradition of Excellence:**
 - **Highest Quality Products**
 - **Experience**
 - Over 50 years in the centrifugal pump business
 - **Optimum Hydraulics**
 - In house engineering staff and test lab facilities
 - **Strong Local Dealer Support**
 - Our agricultural products are sold only through authorized dealerships
 - Dealerships provide full service to customers from sales to replacement parts
 - Dealers maintain and improve their knowledge at educational activities like Gemstone's "Pump School"
 - **Economically Priced:**
 - **Component Design**
 - Efficient manufacturing through increased volume of common parts
 - **Versatility**
 - The ability to mix and match components reducing local inventory of both parts and wholegoods with a wide variety of pumps and mounting configurations for the customer
 - **Exceptional Design:**
 - **Efficiency**
 - Effectively converts energy into fluid flow and pressure
 - **Long Product Life**
 - Thick walled castings
 - Heavy duty shafts
 - 20,000 hour bearings
 - Replaceable wear rings and shaft sleeves
 - Reduced thrust load through design and balance lines where appropriate

PERFORMANCE CURVES

**1.5 WH
3600 RPM**

Speed	Impeller Dia.	Style	Solids Dia.	N _s	Suction	Discharge	No. vanes
3525	VARIOUS	ENCLOSED	.28"	980	2.0"	1.5"	6



Note:
Curves also available in 1800 and various RPM

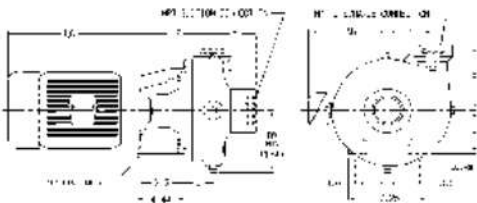


Figure 1

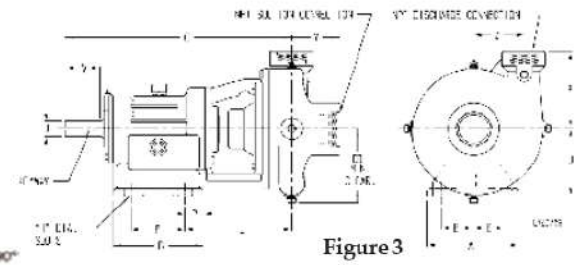


Figure 3

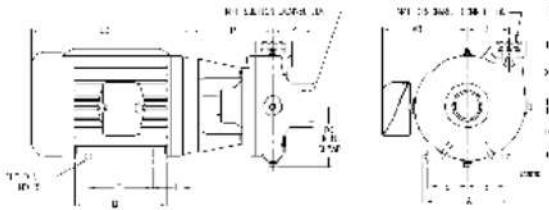


Figure 2

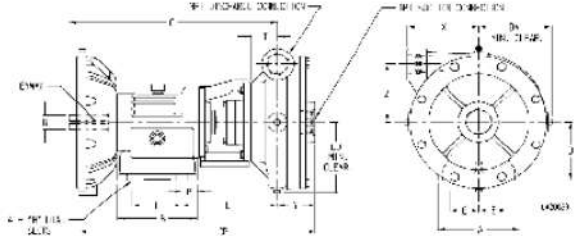
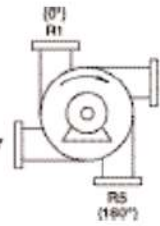


Figure 4

PUMP DIMENSIONS

MOUNT	AK	Fig.	A	B	C	CP	D	DA	DD	E	F	H	L	P	T	U	V	X	Y	Z	LP	KEYWAY
CC	4.5	1	-	-	-	-	-	-	6.25	-	-	-	2.97	-	-	-	-	5	3.53	4.25	7.06	-
	8.5	2	-	-	-	-	-	-	6.25	-	-	-	-	-	-	-	-	5	3.53	4.25	7.88	-
F5	-	3	7.5	7.36	22.03	-	5.5	-	6.25	2.62	4.5	0.56	8.66	1.44	-	1.25	3	5	3.53	4.25	-	.25 x .12
EM5	4	4	7.5	7.36	18.5	21.64	5.5	6.25	6.25	2.62	4.5	0.56	8.66	1.44	-	1.25	-	5	3.53	4.25	-	.25 X .12
EM309	-	4	-	-	18.12	20.27	-	-	6.25	-	-	-	-	-	2.25	1.25	-	5	3.53	4.25	-	.25 X .12

MOTOR DIMENSIONS

MOTOR FRAME	AK DIM.	A	B	D	E	F	H	AB	BA	LC
143-5	4.5	6.5	5.94	3.5	2.75	5	0.34	5.62	2.88	10
182-3	4.5	8.62	6.5	4.5	3.75	5.5	0.41	6.75	3.5	12.25
	8.5	8.62	6.5	4.5	3.75	5.5	0.41	6.75	3.5	12.25
213-5	8.5	9.5	8	5.25	4.25	7	0.41	7.94	4.5	13.69
254-6	8.5	11.25	11.25	6.25	5	10	0.53	9.5	5	17.94

StarTech Pump Company

ISO9001:2000 CERTIFIED