

# STARTECH PUMP COMPANY

25 - 150 GPM **Model 1.25YML** 25 - 200 Feet TDH

## STANDARD SPECIFICATION

**Discharge** - 1.25 inch discharge

**Suction** - 3 inch suction

**Impeller** - Semi-open, threaded, 4 vane: handles .80" solids

**Volute** - Right hand tangential discharge, eight positions

**Mechanical Seal or Traditional Packing** - Single, type 21, silicon carbide/tungsten carbide mechanical seal: Cycloseal® design, Run-dry available

### Materials of Construction

- Cast iron casing, cast iron impeller
- Other materials available

## MOUNTING OPTIONS

- **Close Coupled Electric**
  - StarTech's Energy Efficient Design
  - Single and Three Phase Available
- **Frame Mount** StarTech's F85
- **Engine Bracket**
  - StarTech's EM309 (SAE 5)

## AVAILABILITY

- **Quick Ship**
  - Finished Product Regularly Stocked (48 Hours)
- **Preferred Pump**
  - Finished Components Regularly Stocked (10 business days)
- **Specialty Pump**
  - StarTech's Pump Company will design and manufacture a variation of this pump specifically designed for your application



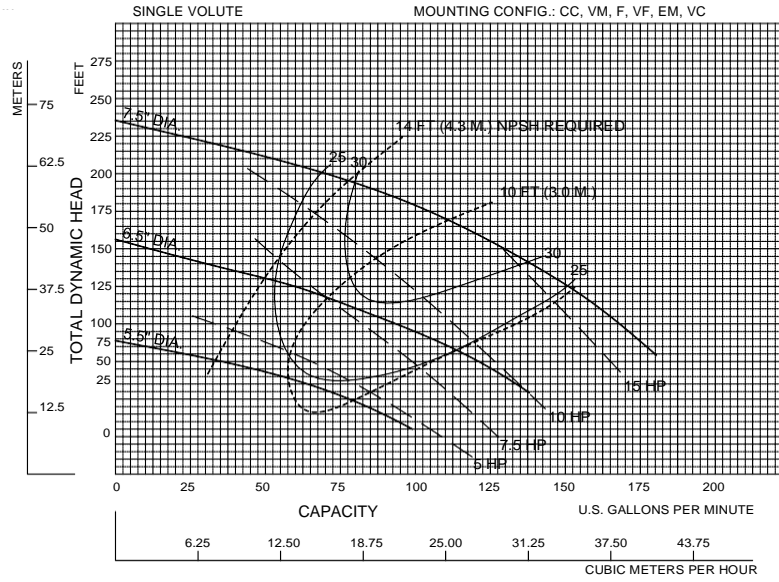
## FEATURES & BENEFITS

- **StarTech's Tradition of Excellence:**
  - **Highest quality products**
  - **Experience**
    - Over 50 years in the centrifugal pump business
  - **Optimum Hydraulics**
    - In house engineering staff and test lab facilities
  - **Strong Local Dealer Support**
    - Our agricultural products are sold only through authorized dealerships
    - Dealerships provide full service to customers from sales to replacement parts
    - Dealers maintain and improve their knowledge at educational activities like StarTechpumps.com "Pump School"
- **Exceptional Design:**
  - **Efficiency**
    - Effectively converts energy into fluid flow and pressure
  - **Long Product Life**
    - Thick walled castings -
    - Heavy duty shafts
    - 20,000 hour bearings -
    - Replaceable wear rings and shaft sleeves -
    - Reduced thrust load through design and balance lines where appropriate

# PERFORMANCE CURVES

**1.25 YML  
3600 RPM**

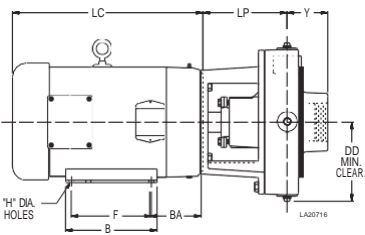
Speed	Impeller Dia.	Style	Solids Dia.	N <sub>S</sub>	Suction	Discharge	No. vanes
3525	VARIOUS	SEMI-OPEN	.80"	850	3"	1.25"	4



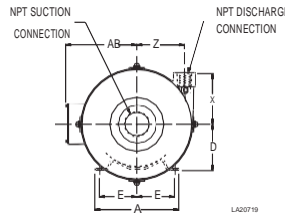
Performances shown are for cool water. Close tolerance impellers are used. Other mounting styles or liquid viscosity may require horsepower and/or performance adjustments.

3/1901

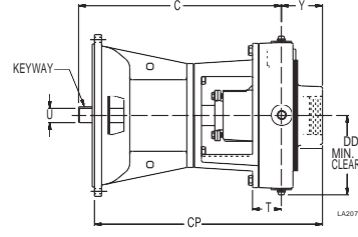
**Note:**  
Curves also available in 1800 and various RPM



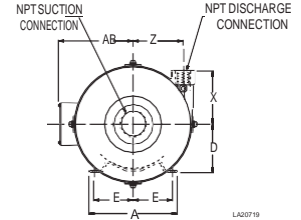
**Figure 1**



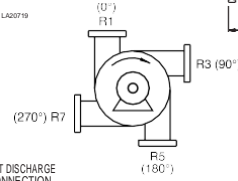
LA20719



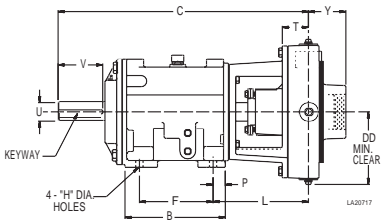
LA20716



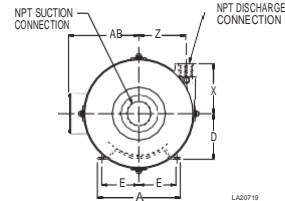
LA20719



**Figure 3**



**Figure 2**



LA20719

## PUMP DIMENSIONS

MOUNT	Fig.	A	AB	B	BA	C	CP	D	DD	E	F	H	L	LC	LP	P	U	V	X	Y	Z	KEYWAY
CC	1	9.5	7.94	8	4.5	-	-	-	7.38	4.25	7	0.41	-	13.69	7.34	-	-	-	5.75	3.56	5.38	-
F85	2	6.5	-	9.52	-	23.66	-	5.25	7.38	2.5	7	0.69	9.06	-	-	1.16	2	4.81	5.75	3.56	-	.50 X .25
EM309	3	-	-	-	-	17.57	19.77	-	7.38	-	-	-	-	-	-	-	1.25	-	5.75	3.56	5.38	.25 X .12

**StarTech Pump Company**